



FOUNDED 1809

WALNUT STREET THEATRE EDUCATION

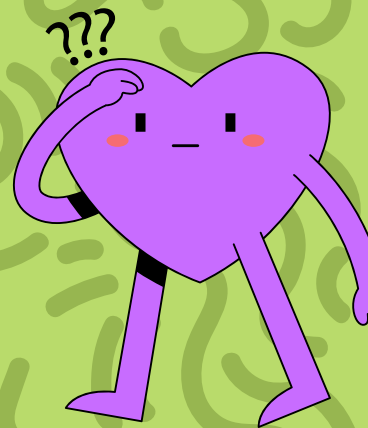


Finding
your
People



STUDY GUIDE

Walnut Street Theatre
Touring Outreach Program
2025



SHOW SYNOPSIS

A diverse group of characters navigates the challenges of friendship, discovering the importance of belonging and finding their true community.

DISCUSSION QUESTIONS

Pre-show

- Have you ever felt like you didn't belong?
- What qualities do you look for in friends?
- What are some ways to meet new people and make friends?

Post-Show

- What challenges did the characters face in finding their group?
- How did the show change your perspective on friendships/community?
- Who are "your people"?

THEATRE 101

PLAYWRIGHT: The person who writes the script.

DIRECTOR: The person in charge of orchestrating the entirety of the production. They lead the actors, designers, and production crew to put the show on its feet.

COSTUMES: What the actors wear during the show.

SCENERY: Everything on stage (except props) used to represent the setting, or the place in which the story is occurring.

PROPS: All physical items on stage with the exception of the scenery. This includes lamps, chairs, pens, paper, books, and more!

LIGHTS: Stage lights illuminate the actors so that they look their best. The colors used, focus of the light, and amount of lighting can really set the mood and environment of a scene.

SOUND: Everything that you hear during a performance that does not come from the actors.

ACTORS: The actors are the people that perform the show on- stage.

AUDIENCE: The lucky people that get to watch the show!

AUDIENCE RULES

Be a Good Audience: Keep quiet —no talking, sleeping, or poking your neighbor. The actors can see and hear you, so let's not distract them!

Leave Gadgets at Home: No phones, cameras, or tablets during the show. They might distract everyone.

React at the Right Time: Laugh, clap, and cry when it feels right. And don't forget to give a big clap at the end!

Stay in Your Seat: Stay seated throughout the show. It helps everyone see and enjoy.

Bathroom Before the Show: Make sure to visit the bathroom before the performance starts.

ACTIVITY

The Wind Moves West

Setup: Arrange chairs in a large circle, with one less chair than the number of players.

Who's the Wind Caller?: The person without a chair stands in the middle and becomes the "Wind Caller."

Wind Statement: The Wind Caller says, "The wind moves west for anyone who..." and shares something personal, like "...has a pet!" or "...has traveled to another state!"

Switch!: If the statement applies to you, hop up and quickly find a new chair—but you cannot sit in the chair directly next to yours!

Who Calls Next?: The last person standing in the middle becomes the new Wind Caller and creates the next statement.

Keep the Wind Moving!: Continue playing until everyone has had a turn as the Wind Caller, fostering connections and lively interactions!



DISCUSSION ACTIVITY

- What qualities do you think are essential for a strong friendship, and why?
- Describe a time when you felt truly accepted by others. What made that experience special?
- How do you handle conflicts or misunderstandings in friendships? What have you learned from those experiences?
- How do you think social media affects our friendships and sense of community?

BRING THE SHOW TO LIFE

Before diving into the scene below, talk with your class about the different elements in a play. What is the setting of the scene? What is the conflict? What props could they use to help tell the story?

What do you think Chance's initial hesitation about his name reveals about his character?

How does the dynamic between Chance and Angela change throughout the conversation? What moments stand out to you?



How does the theme of identity come into play in this conversation? Why is it important for Chance to share his real name?

What can we learn about the importance of being true to oneself from this scene?

SAMPLE SCENE

*Words in parenthesis are not read out loud!
They describe the action of the scene!*

Chance: Hi.

Angela: Hi.

Chance: Sorry, I was coming down the steps with these books and I fell.

Angela: I noticed.

Chance: Sorry.

Angela: It's no problem. I'm Angela.

Chance: Of course you are.

Angela: *(laughing and enjoying his reaction to her)* What?

Chance: I mean nice to meet you I'm... David.

Angela: You don't look like a David.

James: That's because he's not!

Angela: What?

Chance: Some people call me David.

James: Actually only one person calls him David.

Angela: Why did he say you're not a David?

Chance: It's kinda sorta not really my name.

Angela: Then why did you say it was?

Chance: Because I want you to like me.

Angela: And you think if I know your real name I won't like you?

Chance: Something like that.

Angela: What's your real name?

Chance: Chance.

Angela: Chance?

Chance: Chance.

Angela: I like it. I gotta go to room 137.

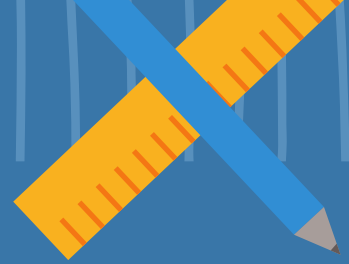
Chance: I was just there. The teacher sent me to grab these books from another room when I tripped. I could show you where it is?

Angela: I'd like that. Am I going with David or am I going with Chance?

Chance: You're going with me. I'm Chance.

Angela: Good to meet you.

REFERENCE SHEET



Authenticity

The quality of being genuine and true to one's own personality, values, and beliefs, rather than trying to fit into what others expect or want. It means embracing who you really are, even if it's different from those around you.

Vulnerability

The state of being open to emotional risk, which involves allowing others to see your true feelings and weaknesses. Being vulnerable can be difficult, but it's often necessary for building deep connections and trust with others.

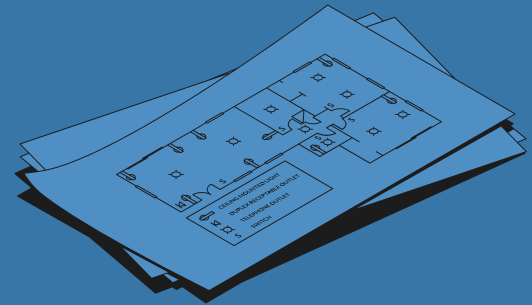
Perception

The way you interpret or understand something based on your experiences, beliefs, and feelings. Perception can shape how you see the world and the people in it, and it can be different for each person.

The Friendship Blueprint: Building Bonds That Last

4 Secrets to Healthy Relationships

- **SECRET #1:** Focus on Values NOT Outcomes
 - **SECRET #2:** Assess + Reassess
- **SECRET #3:** You Teach Others How to Treat You
 - **SECRET #4:** Letting Go is Hard!!



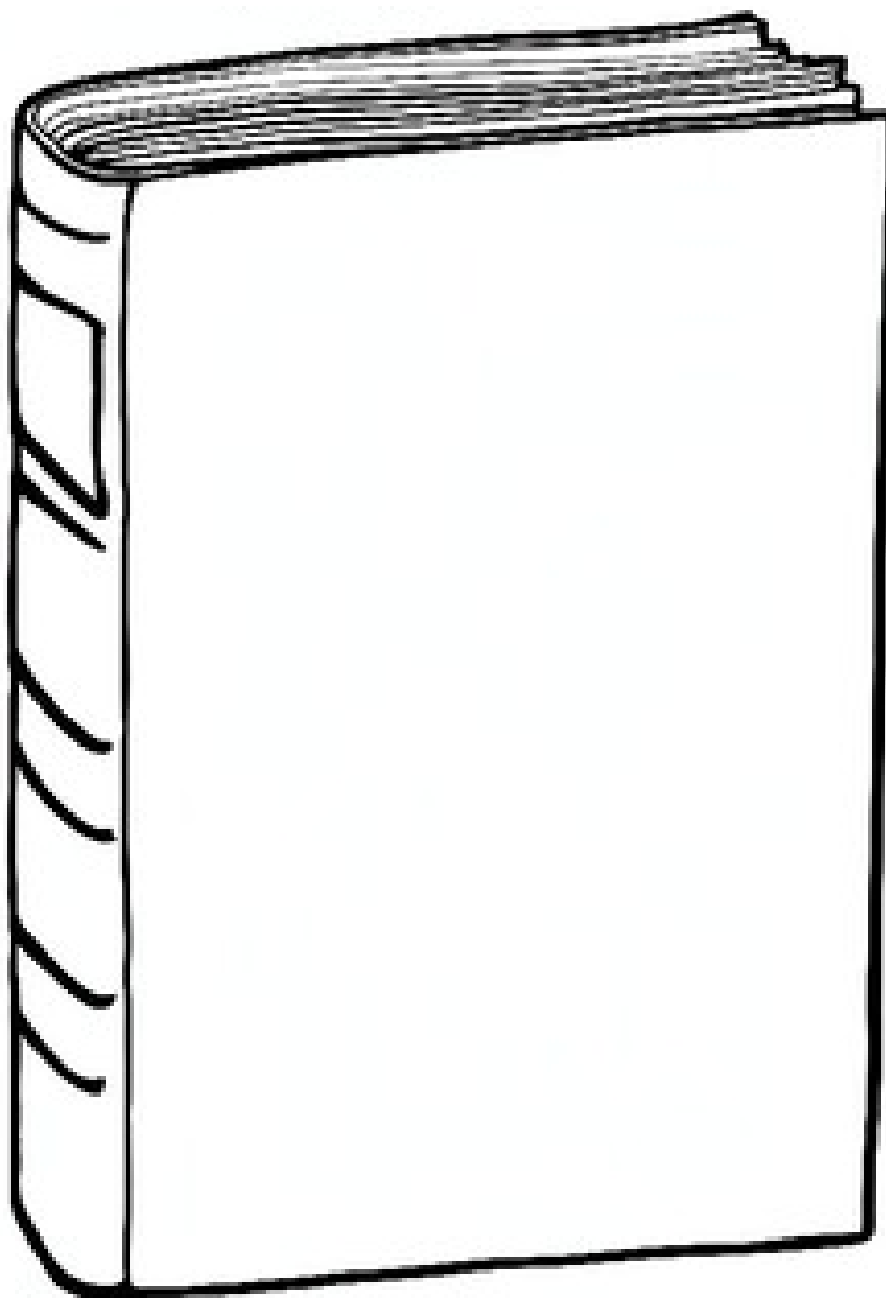
5 Common Mistakes You Should Avoid

- **MISTAKE #1** You're Too Trusting
- **MISTAKE #2** You're Not Trusting Enough
 - **MISTAKE #3** It Will Be Awkward
- **MISTAKE #4** You Don't Listen
 - **MISTAKE #5** You Don't Speak Up



ACTIVITY:

Think of a title that represents your life journey. Design a cover with images/colors that reflect who you are. Finally, share your book with a friend and discuss your stories together.



HOW MANY PEOPLE DOES IT TAKE TO PUT ON A SHOW?

Production Team:

DIRECTOR:

MAYA CHESTER-ZIV

STAGE MANAGER:

ANNA LANGENBERGER

ASSISTANT STAGE

MANAGER:

DEVON DUFFY

PROPS/SCENIC DESIGN:

BLAKE JOHNSON

COSTUME DESIGNER:

ADRIANA SOTO RUIZ

Cast:

Mom/Ms. Hammond:

LINDSEY McCUE

Dad/James/Mr.

Sintef:

JOEY B. WILLIAMS

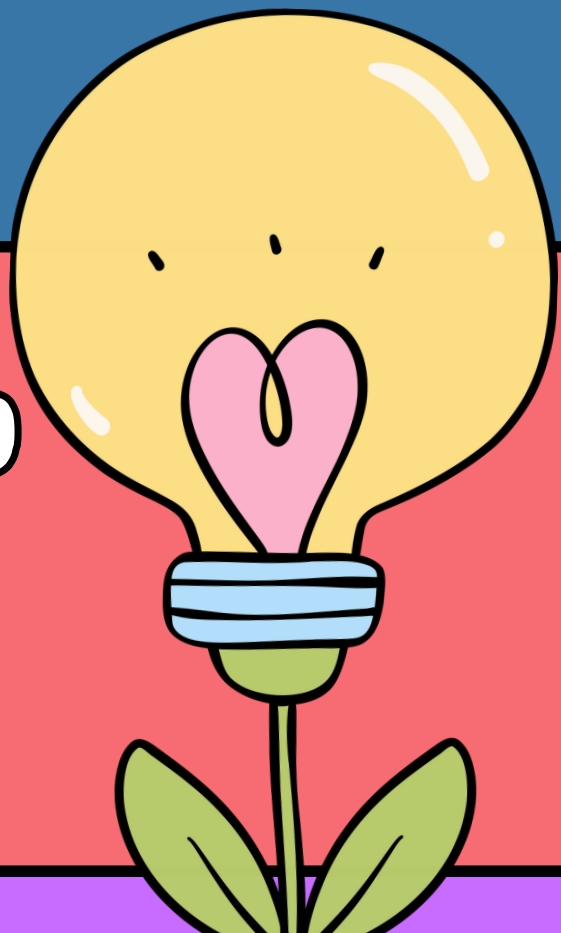
Chance:

ISAAC RIPLEY

Angela:

BRIANA MYERS

**9 PEOPLE HELPED
CREATE THIS
SHOW FOR YOU!**





FOUNDED 1809

WALNUT STREET THEATRE

EDUCATION

Walnut Street Theatre has the unique distinction of being the oldest, continuously operating theatre in the English-speaking world, having served Philadelphia audiences for over 210 years! Due to the direction of Producing Artistic Director Bernard Havard, Walnut Street Theatre has been a self-producing, non-profit theatre company for over 30 seasons. Walnut Street Theatre continues to entertain and enlighten diverse audiences with high quality theatrical programming. With more than 50,000 subscribers, the Walnut is also the most-subscribed theatre company in the world! Last season, 172,000 children and adults were impacted by the Walnut's Education Programs, including our theatre school with classes for kids and adults, Camp Walnut, Our Touring Outreach Program to local schools, and our artist-in-residency programs.

 DIRECTOR OF EDUCATION:

T.J Sokso

ASSOCIATE DIRECTOR OF EDUCATION:

Amanda Pasquini

EDUCATION PROGRAMS MANAGER:

Maya Chester-Ziv

EDUCATION APPRENTICE:

Devon Duffy 

Additional Resources:

[Walnut Street Theatre For Kids](#)

[Drama Games for Kids](#)

OPPORTUNITIES

The Theatre School at Walnut Street Theatre

Classes for kids, students, and adults!
For students of all ages! Great for networking, providing a creative outlet, and professional training. Find your inner star at the Walnut!
Call 215-574-3550, ext. 510

Walnut Street Theatre Residency Program

Let us design a dramatic and educational program for your school! We support teacher's objectives with personalized programs that meet your needs and budget.
Call 215-574-3550, ext. 566

Walnut Street Theatre Touring Outreach

Bring a show to your school! Open a dialogue with students about important issues that affect them!
Call 215-574-3550, ext. 584

Walnut Street Theatre for Kids

Bring your kids to Walnut Street Theatre! Bring a show to your school! Open a dialogue with students about important issues that affect them!
Call 215-574-3550, ext. 566